

PRUEBA DE ACCESO AL PROGRAMA DE FORMACIÓN GENERAL ELEMENTAL**ACCESO A 2º CURSO****MÓDULO 1****Estructura de la prueba:**

A) Ejercicio de lenguaje musical: el contenido de estos ejercicios estará desarrollado en la programación didáctica de la asignatura Lenguaje Musical.

B) Prueba de instrumento: los aspirantes interpretarán al menos 2 estudios y 2 obras de distintos estilos, un estudio y una obra impuesta (**C. Paul Herfurth: A Tune a Day / M. Hugh, D. Stuart: Lesson 21 N° 1/ C. Paul Herfurth: A Tune a Day / M. Hugh, D. Stuart: Lesson 29 N° 3 Largo from "The New World Symphony"**) y otro estudio y obra a elección incluidas en el curso 1º del Programa de Formación General Elemental. Las obras se exigirán completas, pero podrán ser escuchadas en forma parcial. Dentro de la selección del estudiante, podrán incluirse obras para el instrumento solo o acompañado. Se valorará la ejecución de memoria de las obras presentadas. En ningún caso se facilitará pianista acompañante.

Las obras, piezas o ejercicios que seleccione el estudiante para la prueba estarán incluidos en el siguiente listado:

Estudios a elección:

- C. Paul Herfurth: A Tune a Day / M. Hugh, D. Stuart: *Lesson 30 N° 5*.
- C. Paul Herfurth: A Tune a Day / M. Hugh, D. Stuart: *Lesson 32 N° 6*.

Obras a elección:

- C. Paul Herfurth: A Tune a Day / "Country Gardens", Supplementary Material Through Lesson 33.
- C. Paul Herfurth: A Tune a Day / "Dixie", Supplementary Material Through Lesson 33.
- C. Paul Herfurth: A Tune a Day / "Santa Lucia", Supplementary Material Through Lesson 33.

LESSON 21

- OBJECTIVES: 1. Continuation of Alla breve (cut time).
 2. To learn some new musical terms.
 3. To learn the fingering for B-flat, second space above the staff.
 4. Application of previous knowledge.

A Capital Ship

Tempo di Marcia (in march time)

An Old English Tune

①

Think Count & 1 & 2 &

Musical notation for 'A Capital Ship' in 2/4 time, key of B-flat major. It consists of four staves of music. The first staff starts with a treble clef, a key signature of one flat, and a common time signature. The music is marked *mf*. Above the first few notes, there are markings: 'T2' above a B-flat note, '(b)*' above a B-flat note, and '(F)' above a B-flat note. The second staff has a 'rit' marking below it. The third staff has a 'f' marking below it. The fourth staff has 'rit' markings below it and 'a tempo' markings above it. There are several '(F)' markings above notes throughout the piece.

College Song **

Allegro (fast)

J. Brahms

②

Think Count 2 1 2

Musical notation for 'College Song' in 2/4 time, key of B-flat major. It consists of two staves of music. The first staff starts with a treble clef, a key signature of one flat, and a common time signature. The music is marked *mf*. The second staff has a 'cresc.' marking below it and a 'f' marking below it. There are '(F)' markings above notes throughout the piece.

Theme from, "Rosamunde"

Allegro

F. Schubert.

③

Musical notation for 'Theme from Rosamunde' in 2/4 time, key of B-flat major. It consists of two staves of music. The first staff starts with a treble clef, a key signature of one flat, and a common time signature. The music is marked *mp*. The second staff has a '(F)' marking above a note. There are several '(F)' markings above notes throughout the piece.

New Musical Terms

p - Piano = Softly
mf - mezzo forte = Medium loud
f - forte = Loudly
cresc. - crescendo = Gradually louder

Rit-ritenuto = Gradually slower
a tempo = At original speed
 ◡ - fermata = Hold longer
 ♯ = Repeat the preceding measure

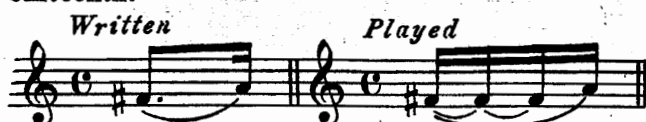
* For this B-flat add key T2 to fingering for 3rd line B-flat.
 ** This theme (melody) used by Brahms in his "Academic Festival Overture".

LESSON 29

- OBJECTIVES: 1. To learn dotted eighth and sixteenth notes, legato.
 2. To learn the correct division of each beat.
 3. Application of the new rhythm.

Dotted Eighth and Sixteenth Notes Legato (Connected)

This is one of the more difficult rhythms to learn. The dotted eighth note is equal to three sixteenth notes. Always feel a division of four on each beat when playing this rhythm, three on the dotted eighth and one on the sixteenth.



BE SURE TO PLAY THE DOTTED EIGHTH NOTE LONG ENOUGH AND THE SIXTEENTH NOTE SHORT ENOUGH.

Largo (very slow)

① Think Count 12 & 34 & 12 & 34 &

②

12 & 34 & 56 & 78 &
 1 & a 2 & a 3 & a 4 & a

12 & 34 & 56 & 78 &
 1 & a 2 & a 3 & a 4 & a

Largo from "The New World Symphony"

Luet

A. Dvorák

Largo (very slow)

Pupil ③ Think Count *p* 12 & 3456 & 78

Pupil *p*

cresc. *f* **dim.* *p* COUNT *pp* COUNT

See page 85

* *dim.* (diminuendo) = Gradually softer.

SUPPLEMENTARY MATERIAL THROUGH LESSON 33

Santa Lucia

Andantino* Neapolitan Boat Song

① Pupil

Pupil

** *p*

P.

mf

1. 2.

Country Gardens

Allegretto Folk-Song

②

mf *f*

mf

Dixie

Allegretto D. Emmet

③

mf

1. 2.

f

* *Andantino* - Not quite as slow as *Andante*.

** In three-eighth time the eighth note is the unit of a beat (♩).

B.M. Co. 11893

LESSON 30

OBJECTIVES: 1. To learn dotted eighth and sixteenth notes, staccato.*
 2. Application of this difficult rhythm in familiar melodies using $\frac{2}{4}$ and $\frac{4}{4}$ time.

Dotted Eighth and Sixteenth Notes Staccato (Detached)

Dotted eighth and sixteenth notes played staccato (detached) are separated by a short pause. Notice how these notes are written and how they are actually played.

Written *Played*

①

②

Joy to the World (Duet)

G.F. Handel

Allegretto

Pupil

④

Think Count 1 2 & a

Pupil

Battle Hymn of the Republic

Allegretto

Time signature is: _____?

Steffe

⑤

mf 4 1 & a 2 & a 3 & a 4 & a

* A dot (·) above or below a note indicates that the note is to be played short. This is called staccato.

LESSON 32

- OBJECTIVES: 1. To understand and play chromatics.
 2. To learn more about enharmonic tones.

Chromatics

The word "chromatic" means moving by half steps. A chromatic scale is one that ascends or descends by half steps. Enharmonic tones sound the same even though they are notated on different degrees of the staff.

BE SURE TO LEARN THE PROPER NAMES AND FINGERINGS FOR BOTH ASCENDING AND DESCENDING CHROMATIC SCALES.

①

②

③

④

Chromatic Scale of C in Two Octaves

Play slowly at first, and gradually increase speed

⑤

Chromatic Etude

Fr. Wohlfahrt
(Adapted)

(NOT PLAYABLE WITH FLUTES)

⑥

1 & 2 & 3 & 1 2 3